

**Zoning Districts**

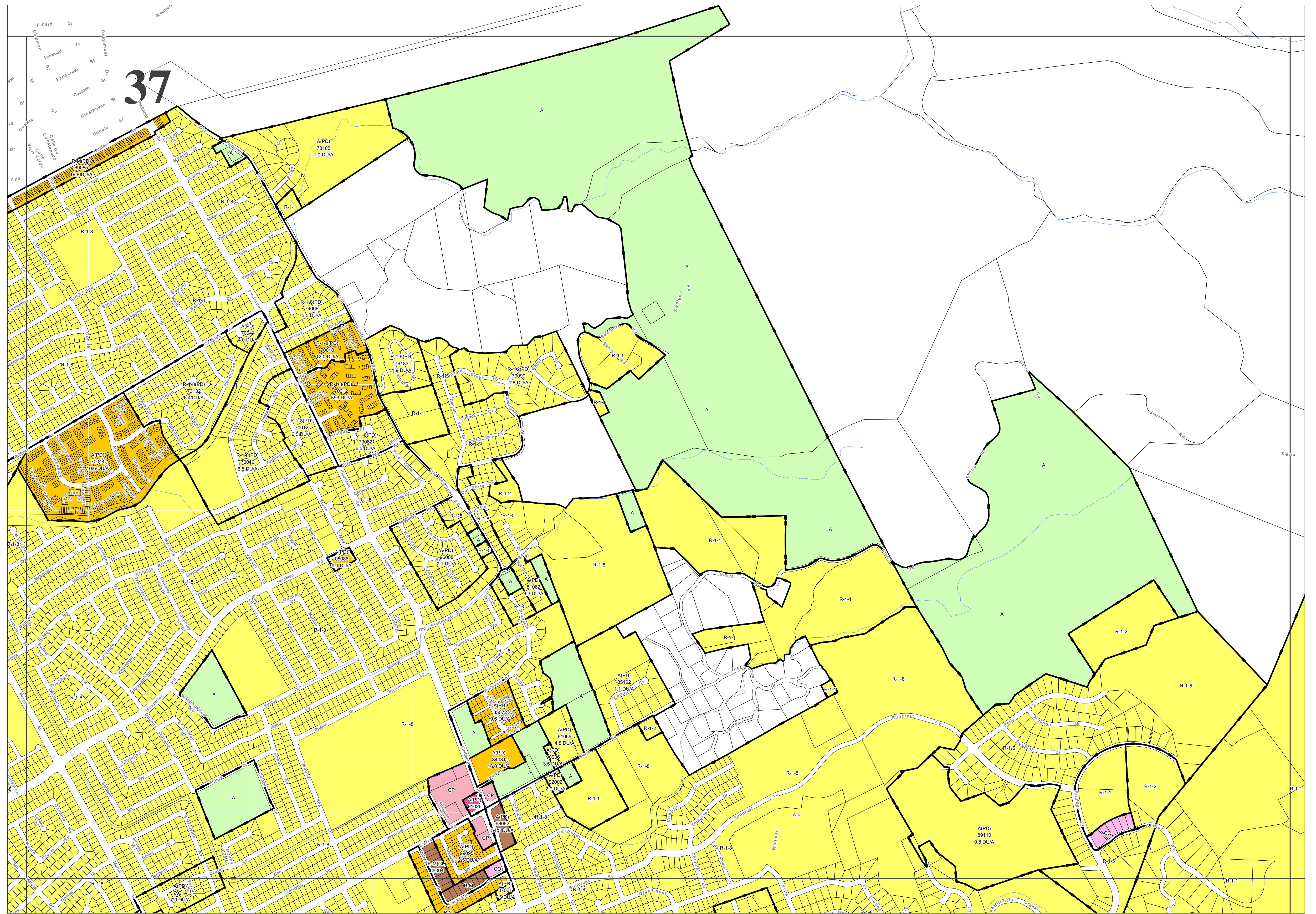
- OS.....Open Space
- A.....Agricultural
- R-1-8 } Single-Family Residential
- R-1-5 }
- R-1-2 }
- R-1-1 }
- R-2.....Two-Family Residential
- R-M.....Multi-Family Residential
- R-1-RR.....Rural Residential
- R-MH.....Mobilehome Residential
- CO.....Commercial Office
- CP.....Commercial Pedestrian
- CN.....Commercial Neighborhood
- CG.....Commercial General
- DC.....Downtown Commercial
- DC-NT1.....Downtown Comm. (N'hood Transition)
- MS-G.....Main Street Ground-Floor Commercial
- MS-C.....Main Street Commercial
- CIC.....Combined Industrial/Commercial
- TEC.....Transit Employment Center
- IP.....Industrial Park
- LI.....Light Industrial
- HI.....Heavy Industrial
- (PD).....Planned Development  
(overlay district that is combined with one of the conventional zoning districts listed above)

**Zoning Labels (Sample)**

- A(PD).....Zoning District
- 93050.....Zone Change File Number
- 34.0 DU/A.....Approved Residential Density (dwelling units per acre)

**Map Legend**

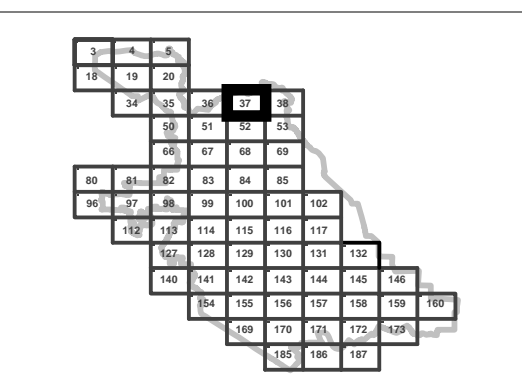
- .....Zoning District Boundary
- .....Historic District Boundary (work requires Planning permit)
- ★.....Historic City Landmark (work requires Planning permit)



**Zoning Map**

**Department of Planning, Building & Code Enforcement  
Planning Division**

**Scale: 1"= 600'  
Updated: Jan. 1, 2014**



**37**