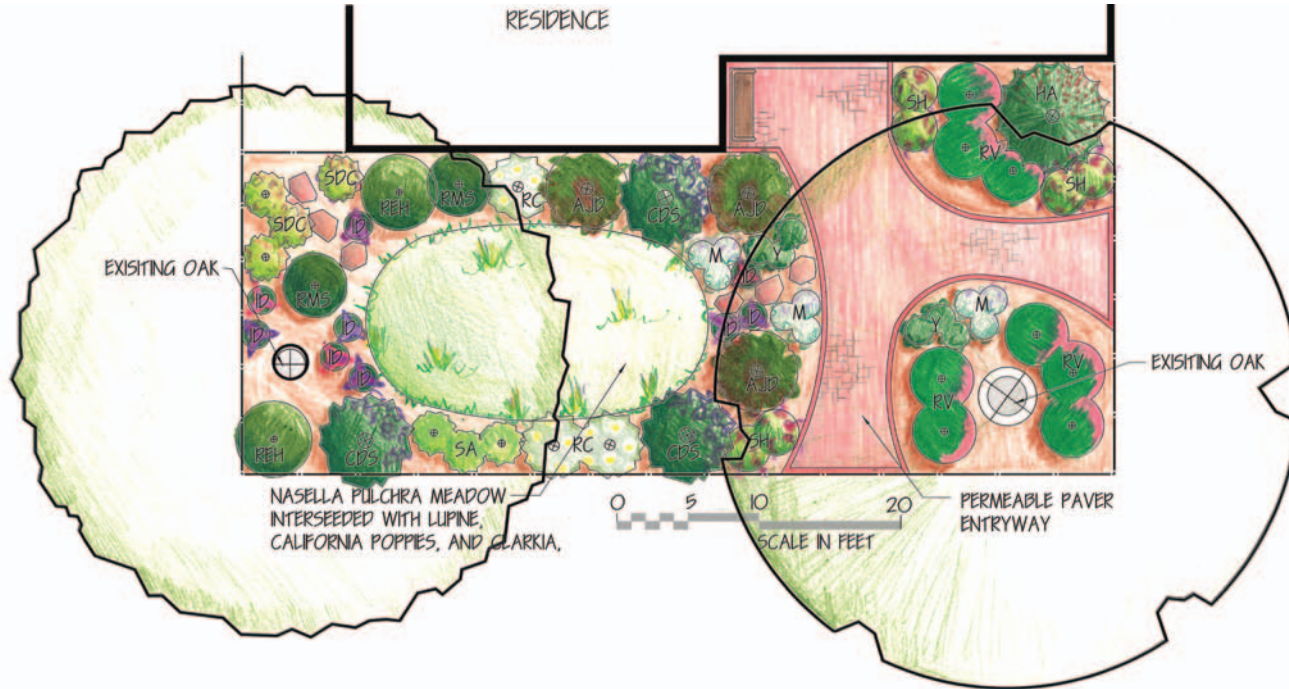


# The Shade Garden



**Wild Lilac**  
*Ceanothus 'Dark Star'*



**Pink Flowering Currant**  
*Ribes vibernifolium*



**Hummingbird Sage**  
*Salvia spathacea*



**Snowberry**  
*Symphoricarpos albus*



**Coffeeberry**  
*Rhamnus californica*  
*'Mound San Bruno'*

## About the Concept Design Series

These designs are simple concepts to provide inspiration and ideas. Check with local nurseries, landscapers or other sustainable garden designers to help choose the best plants for your yard.

