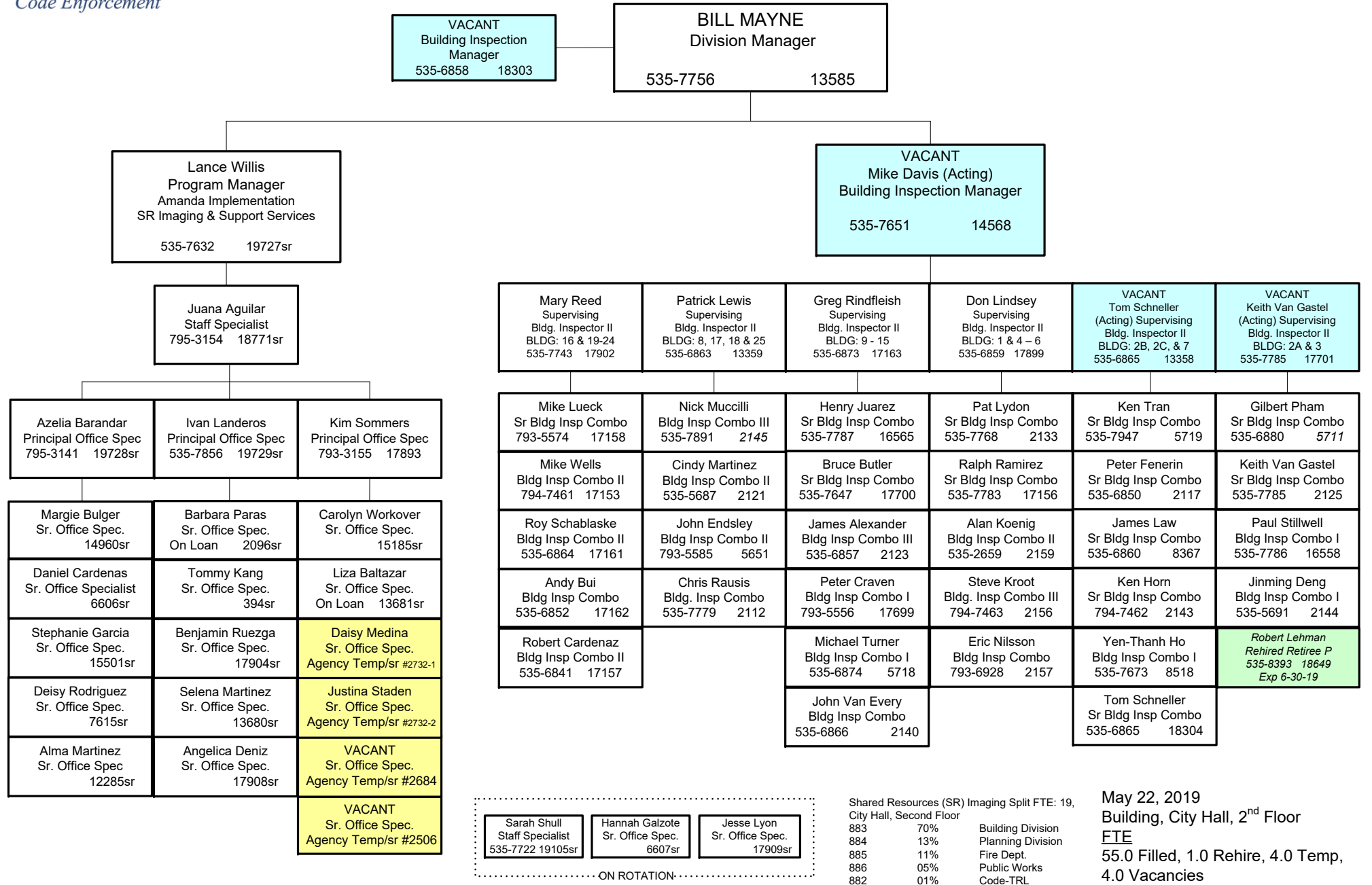


Building Inspection & Support Services



ON ROTATION

Sarah Shull Staff Specialist 535-7722 19105sr	Hannah Galzote Sr. Office Spec. 6607sr	Jesse Lyon Sr. Office Spec. 17909sr
---	--	---

Shared Resources (SR) Imaging Split FTE: 19,
City Hall, Second Floor

883	70%	Building Division
884	13%	Planning Division
885	11%	Fire Dept.
886	05%	Public Works
882	01%	Code-TRL

May 22, 2019
Building, City Hall, 2nd Floor
FTE
55.0 Filled, 1.0 Rehire, 4.0 Temp,
4.0 Vacancies
Bldg fee funded unless noted w/PCN