

# URBAN GROWTH BOUNDARY

## *The Greenline Initiative*

The Urban Growth Boundary (UGB) establishes the ultimate limit on urbanization in San José. It was originally adopted and incorporated into the San José 2020 General Plan by a unanimous vote of the City Council in November 1996. See reverse side for UGB alignment.



San José's experience with rapid growth, between the 1950s and 1970s, provided hard lessons regarding the cost of urban sprawl. The City found that urban development at its edge, particularly residential development, did not generate sufficient revenues to cover the cost of providing urban services and infrastructure for those uses. Beginning in the early 1970's San José has used a variety of growth management tools to curb urban sprawl.

The Urban Growth Boundary is the latest in the series of growth management tools employed by San José to manage its growth, balance its budget, and preserve open space. Prior programs and policies have been very effective at managing, without inhibiting, San José's vigorous growth activity. The UGB builds upon those efforts. New development has been successfully directed into appropriate urban areas and away from non-urban areas.

The Urban Growth Boundary was created to help sustain the long term stability of the City's growth management efforts by:

- Clearly identifying which lands are intended for urban use and which are intended to remain rural

- Promoting environmentally and fiscally sustainable infill development
- Preserving surrounding hillsides, wetlands and open space lands as a legacy for future residents
- Protecting public health and safety by preventing urban development in areas subject to natural hazards
- Providing property owners and the public greater certainty about the City's long term plans for urban development
- Establishing criteria and a process for a comprehensive review of proposed UGB expansions
- Strengthening the consistency between City and Santa Clara County land use plans and development policies

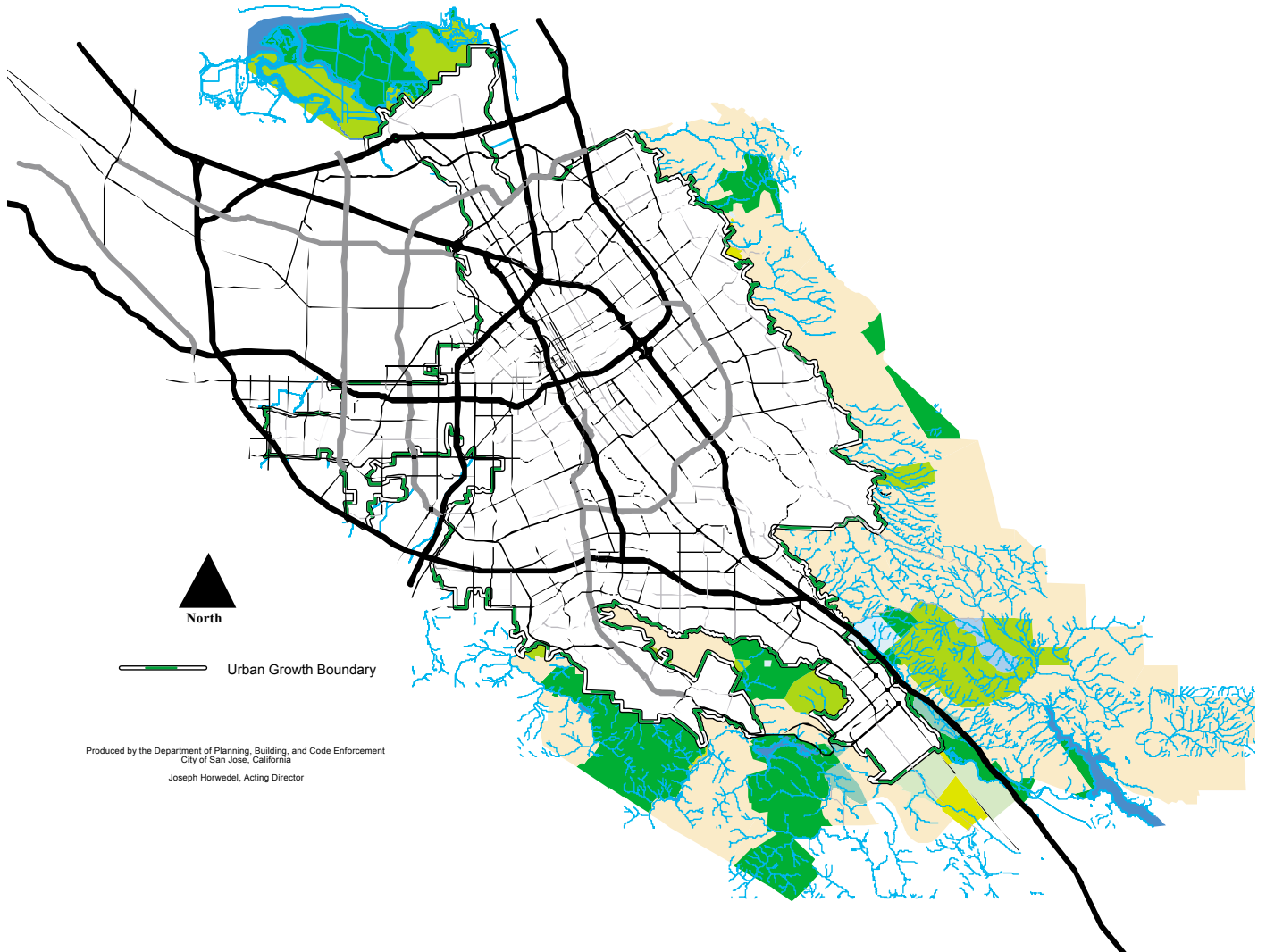
Consistency between City and County planning and development has been critical to the success of San José's growth management policies. Since 1970, the City of San José and the County of Santa Clara have enjoyed a unique jurisdictional agreement under which urban development occurs only within the City's urban service area.

*The* Urban Growth Boundary program includes significant criteria for considering expansions of the Boundary.

The County of Santa Clara is an effective partner in San José's effort to manage urban growth.

SMART  
GROWTH

# *City of San José 2020 Urban Growth Boundary*



Produced by the Department of Planning, Building, and Code Enforcement  
City of San José, California  
Joseph Horwedel, Acting Director



*City of San José, Department of Planning, Building and Code Enforcement*  
City Hall, Room 400 • 801 North First Street • San José, CA 95110  
Tel: 408.277.4576 • Fax: 408.277.3250 • [www.ci.sj.ca.us/planning](http://www.ci.sj.ca.us/planning)