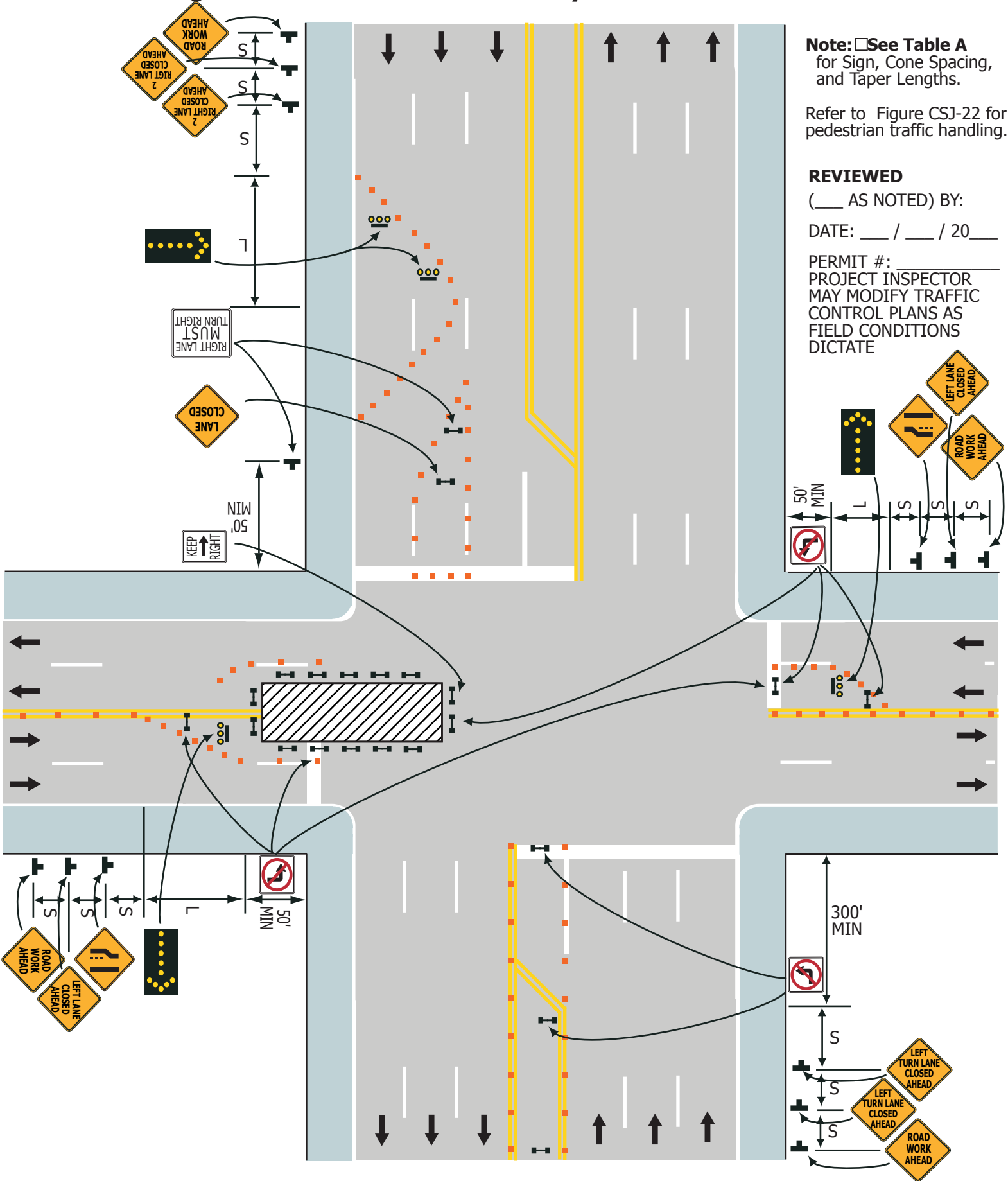


Figure CSJ-14. Center Lanes - Beyond Intersection Closure



Note: See Table A for Sign, Cone Spacing, and Taper Lengths.

Refer to Figure CSJ-22 for pedestrian traffic handling.

REVIEWED

(___ AS NOTED) BY:

DATE: ___ / ___ / 20___

PERMIT #: _____
 PROJECT INSPECTOR
 MAY MODIFY TRAFFIC
 CONTROL PLANS AS
 FIELD CONDITIONS
 DICTATE

Typical Application 14