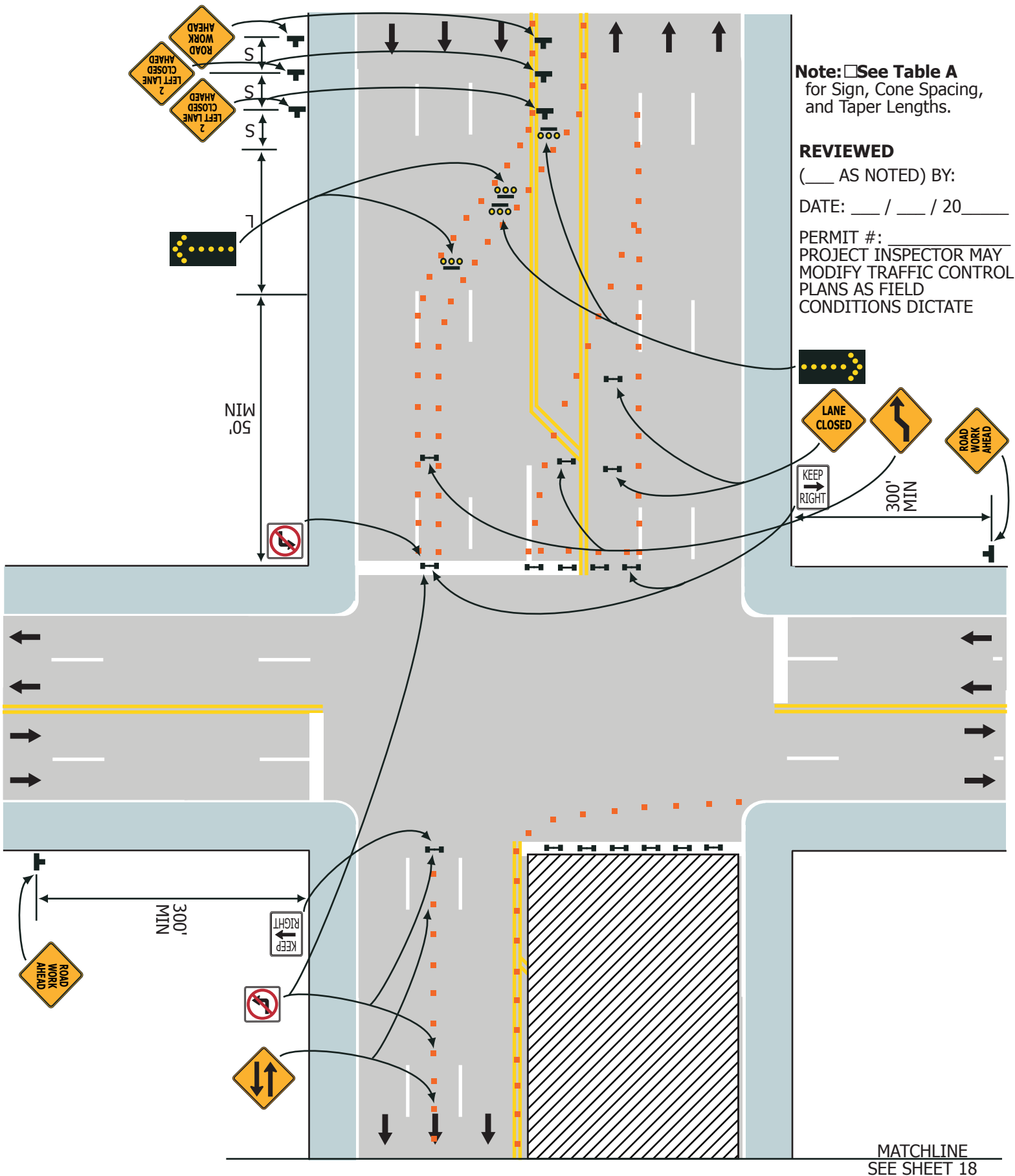


Figure CSJ-19. Near Half Street Closure



Note: See Table A for Sign, Cone Spacing, and Taper Lengths.

REVIEWED

(___ AS NOTED) BY:

DATE: ___ / ___ / 20___

PERMIT #: _____
 PROJECT INSPECTOR MAY
 MODIFY TRAFFIC CONTROL
 PLANS AS FIELD
 CONDITIONS DICTATE

MATCHLINE
 SEE SHEET 18

Typical Application 19