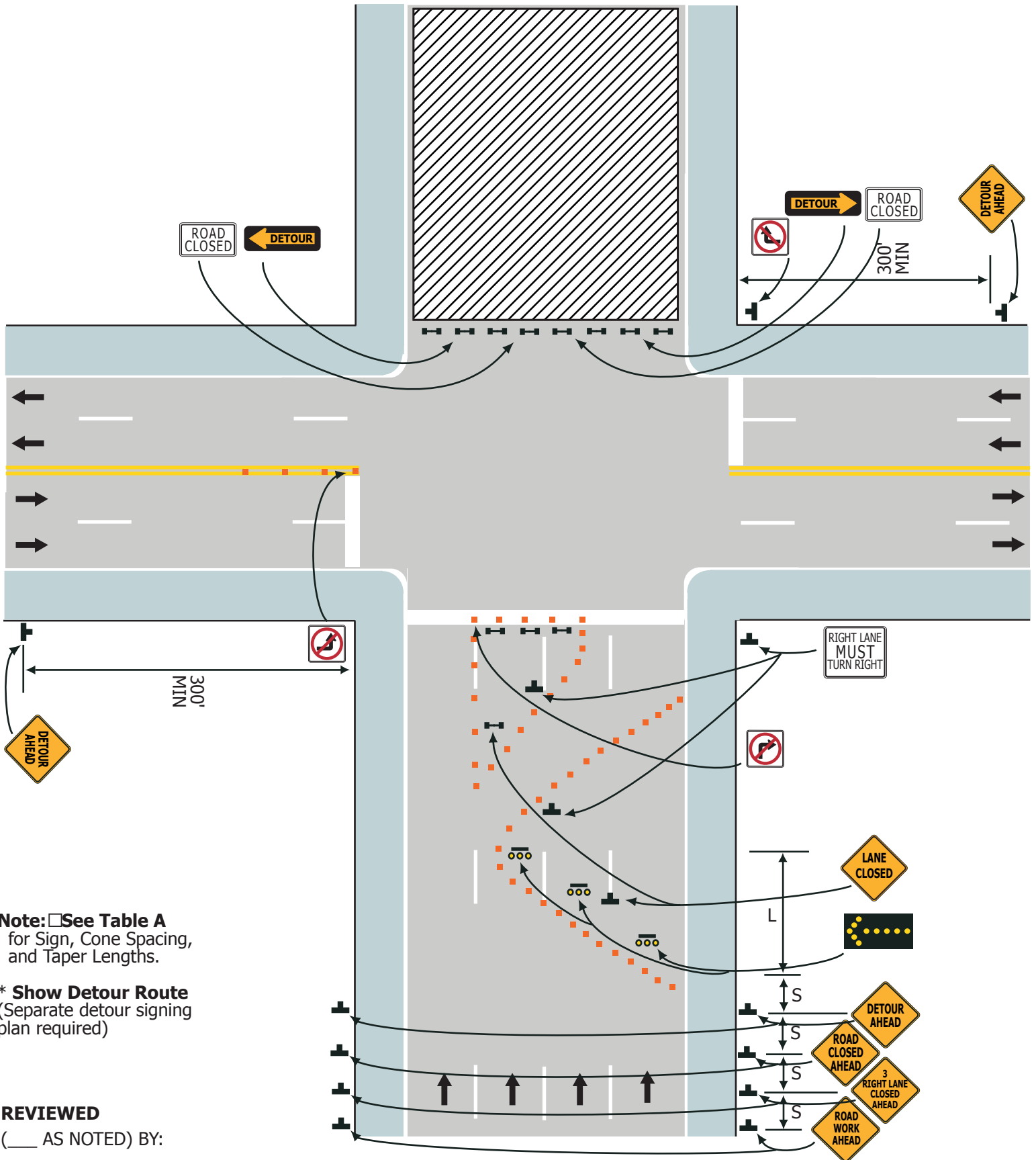


**Figure CSJ-21. Full Street - One Way Street Closure**



**Note:** See Table A for Sign, Cone Spacing, and Taper Lengths.

\* Show Detour Route (Separate detour signing plan required)

**REVIEWED**

(\_\_\_ AS NOTED) BY:

DATE: \_\_\_ / \_\_\_ / 20\_\_\_

PERMIT #: \_\_\_\_\_  
 PROJECT INSPECTOR MAY  
 MODIFY TRAFFIC CONTROL  
 PLANS AS FIELD  
 CONDITIONS DICTATE

**Typical Application 21**