



File Nos. PDC11-023 and PD11-022
COMMUNITY MEETING INVITATION

Location: East Gish Road Challenger School Campus – Multipurpose Room
711 East Gish Road, San Jose, CA
Date: Thursday, February 23, 2012
Time: 6:30pm – 7:30pm

Dear Neighbor,

The City of San Jose Planning Division would like to invite you to a community meeting about a proposed development in your area (see map). Planning staff will be facilitating the meeting, providing you an opportunity to learn about the proposal and get answers to your questions. We are very interested in your input on this proposal and encourage your attendance at this meeting. We will consider all comments during our evaluation of the proposal.

Proposal: A Planned Development Rezoning to add up to 183 students and approximately 7,500 square feet of classroom and office space and a Planned Development Permit to add 8 new portable buildings, modify an existing parking lot and add a new parking area to an existing school in the A (PD) Planned Development Zoning District on an existing private school campus on an approximately 7.23-gross-acre site on the north side of East Gish Road approximately 300 feet westerly of Oakland Road (711 East Gish Road). Your participation in the planning process will help us analyze the request and consider the community's input. If you have any questions before the meeting or during the process, please contact:

City of San Jose:
Planning Division
Jenny Nusbaum
Project Manager
Phone: (408) 535-7872
Email: jenny.nusbaum@sanjoseca.gov

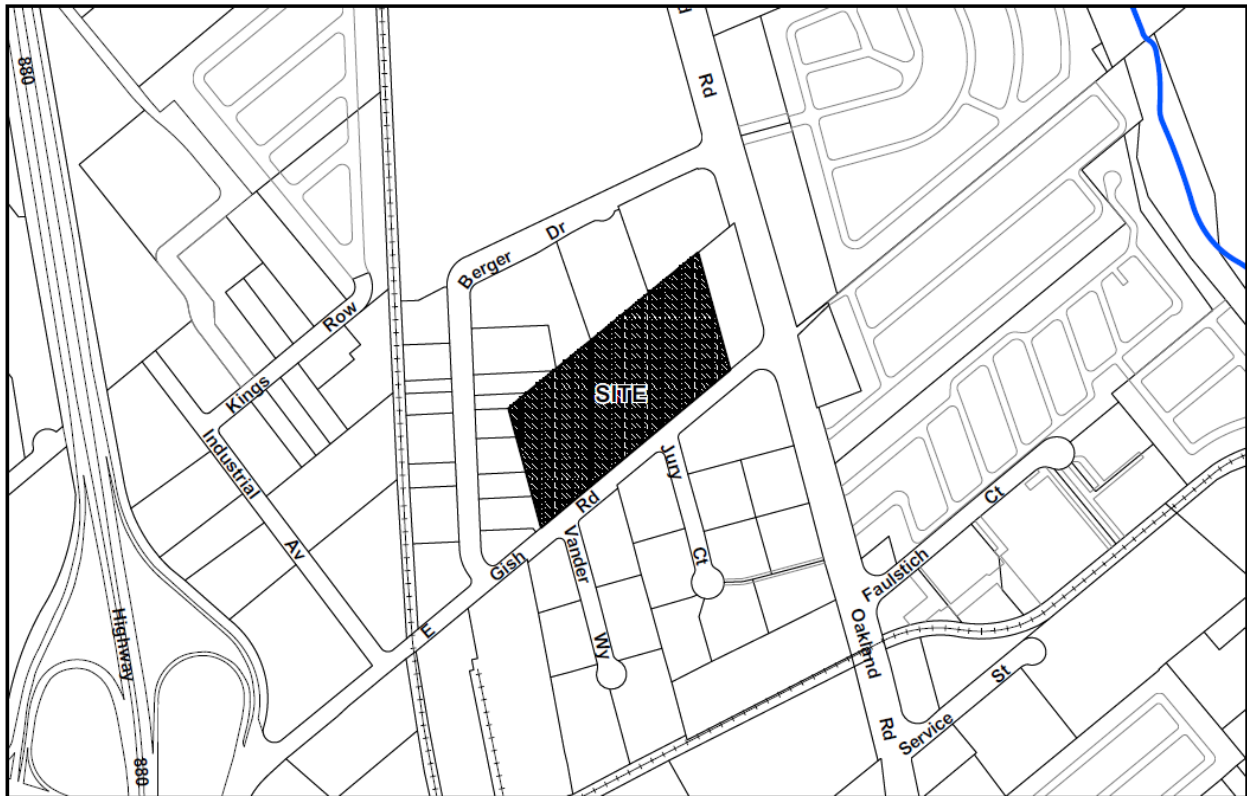
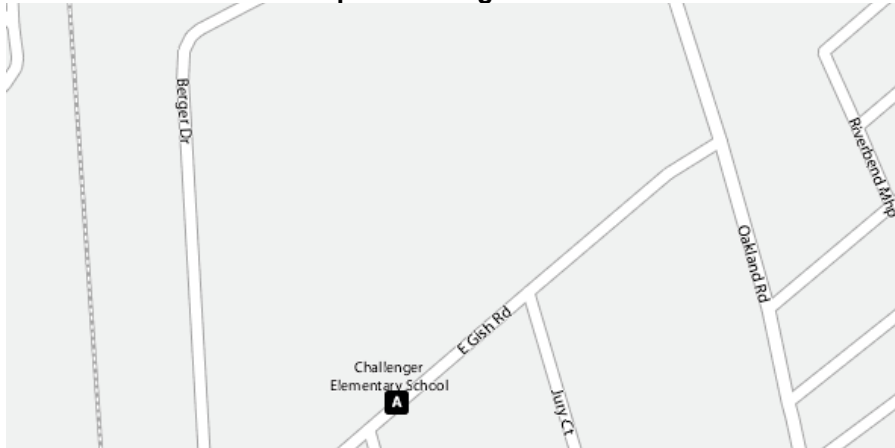
Applicant's Representative:
Hanh Nguyen
Habitec Architecture and Planning
Phone: 408-977-0606
E-mail: hnguyen@habitec.com

Muốn biết tin tức bằng tiếng Việt Nam về tờ thông tin này, xin quý vị liên lạc Kayla Do ở số (408) 535-7721.

Para información en español acerca de esta solicitud, comuníquese con Maria Diaz-Perez al (408) 535-7660.

Map of Project Site

Map to Meeting Location



COMMUNITY MEETING

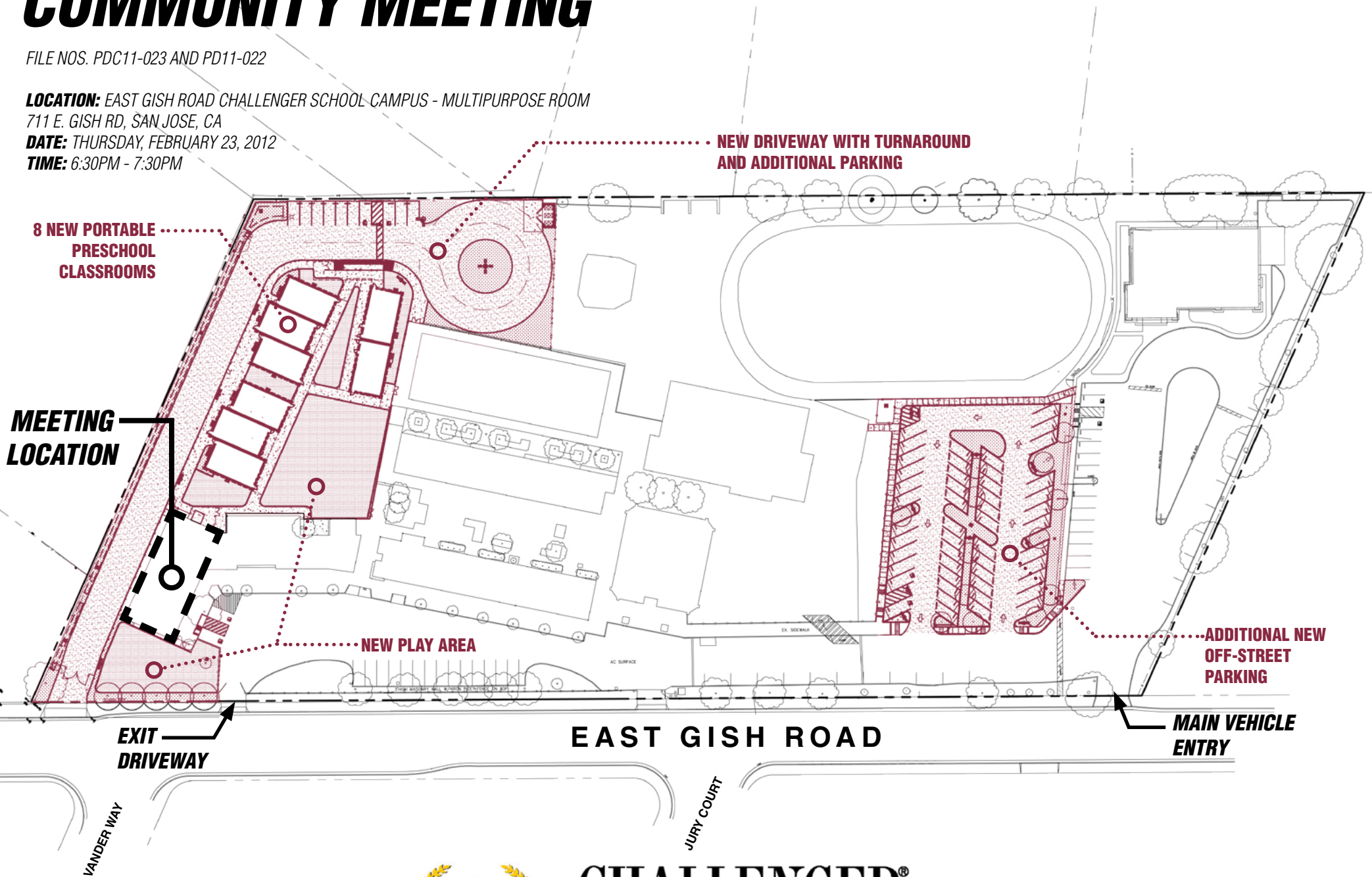
FILE NOS. PDC11-023 AND PD11-022

LOCATION: EAST GISH ROAD CHALLENGER SCHOOL CAMPUS - MULTIPURPOSE ROOM

711 E. GISH RD, SAN JOSE, CA

DATE: THURSDAY, FEBRUARY 23, 2012

TIME: 6:30PM - 7:30PM



CHALLENGER[®]
SCHOOL
711 EAST GISH ROAD
SAN JOSE, CALIFORNIA 95112