

SAN JOSE  
**PARKS, RECREATION &  
NEIGHBORHOOD SERVICES**



# Frank M. Santana Park Master Plan

Community Outreach Workshop #1  
December 3, 2025



# Introductions

Rosemary Kamei

City of San Jose, Councilmember

Jason Condit

City of San Jose, Senior Landscape Architect

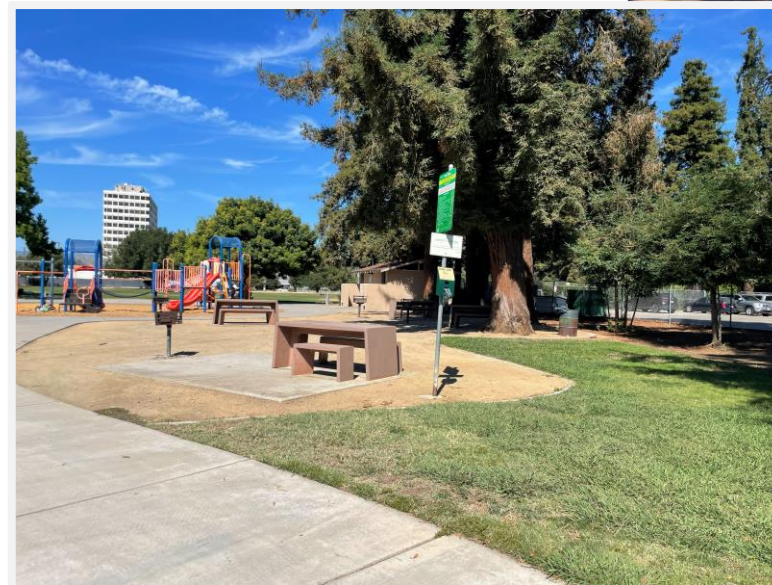
Marley Thompson and Erik Smith

Mark Thomas, Landscape Architect Consultant

# Why We Are Here

## PARK MASTER PLANNING

- Community Feedback
- I-280/Winchester Blvd. project impacts to the park site
- Park expansion and upgrade opportunities



# Meeting Agenda

- Park Background and Context
- Existing and Future Site Conditions
- Opportunities and Constraints
- Master Plan Schedule
- Breakout Session
- Next Steps

# Park History

## 1956-1960

Park developed and named Monroe-Moorpark Recreation Area

## Mid 1960s-Early 1970s

I-280 constructed through west San Jose bisecting working class neighborhoods



## 2010-2014

City approved abandonment of South Baywood Avenue and rezoned four parcels between Santana Park and Hatton Street for potential public park use and expansion



## 2017

Parcels 12 and 14 identified as potential park expansion sites

## PRE-1956

Area used primarily for agriculture

## 1962

Park renamed Frank M. Santana Park in honor of Mr. Santana, who served on San Jose's Planning Commission in the 1950s



## 1999-2002

Park improvements included youth play lot, picnic area, concrete walkways, benches, drinking fountains, sports fields, and landscaping



## 2016

Parcel 11 dedicated to future parkland along former South Baywood Avenue

## 2020-2023

November 5, 2020: VTA proposed improvements to I-280/ Winchester Boulevard



# Park Context

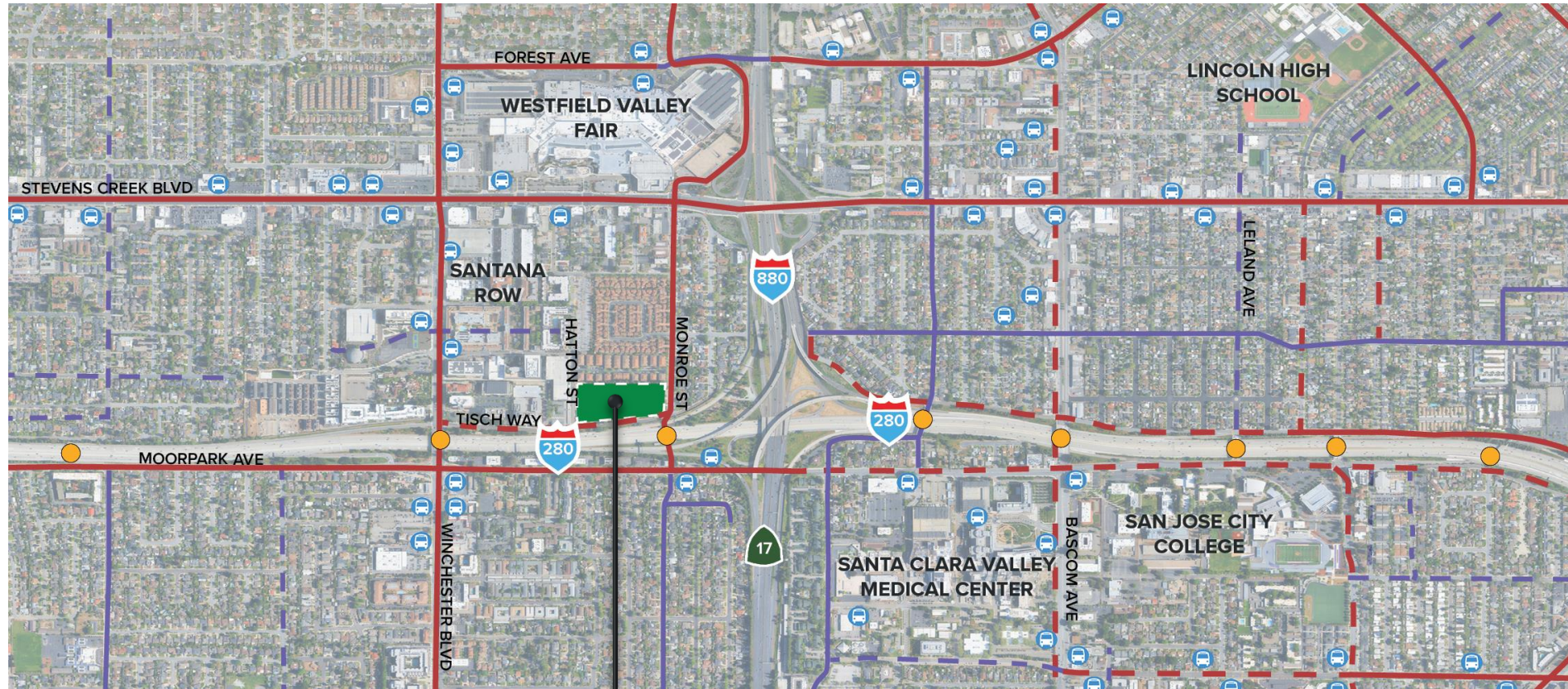


## LEGEND

-  PARKS
-  RECREATION GREEN SPACE, & COMMUNITY FACILITIES



# Park Access



Project Site  
Frank M. Santana Park

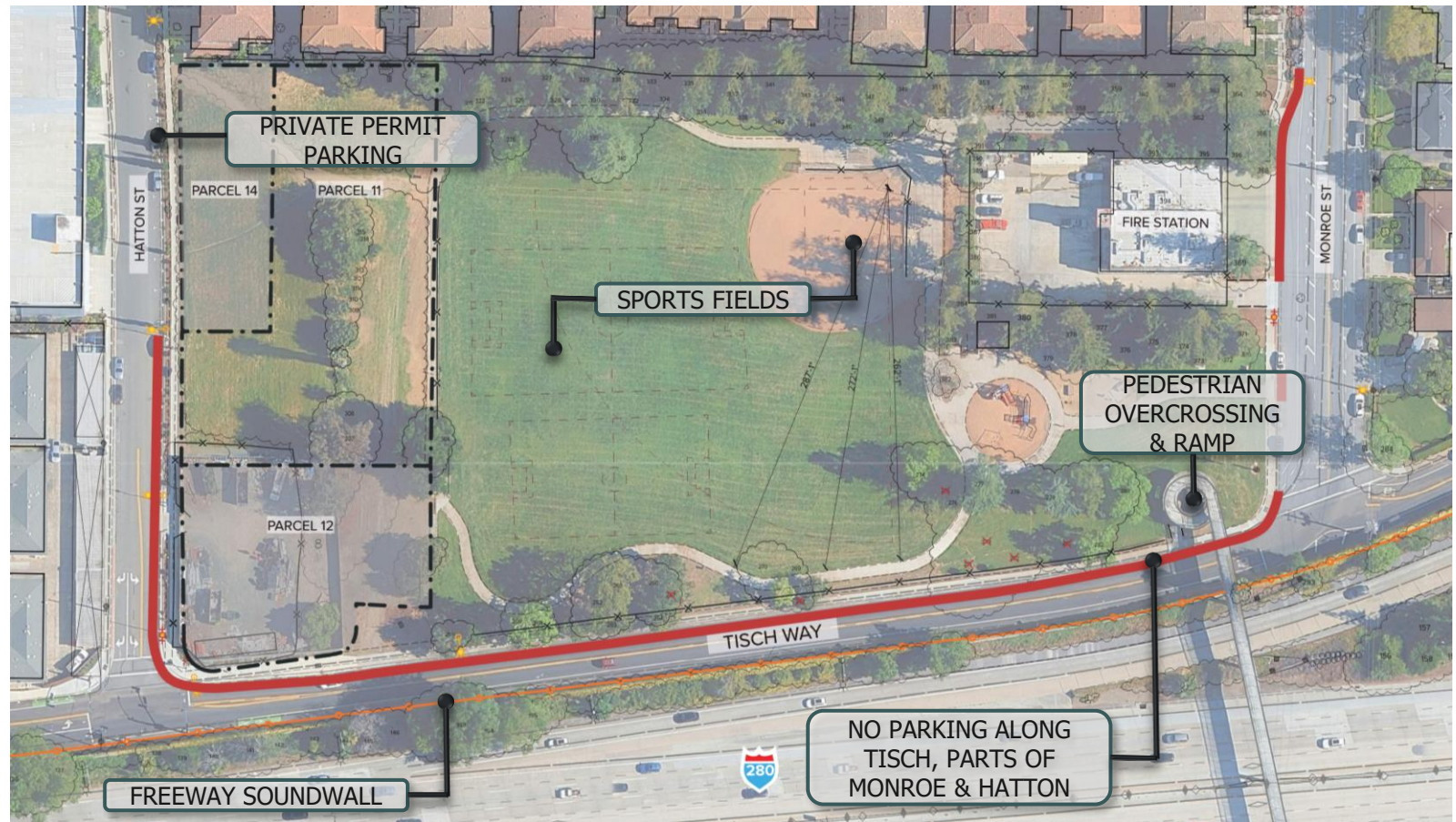
## LEGEND

- EXISTING CLASS II: BIKE LANES
- EXISTING CLASS II: BIKE ROUTES & BIKE BOULEVARDS
- PROPOSED CLASS II: BIKE LANES
- PROPOSED CLASS II: BIKE ROUTES & BIKE BOULEVARDS
- BIKE/PEDESTRIAN FREEWAY OVERCROSSING
- BUS STOPS



# Existing Site Conditions

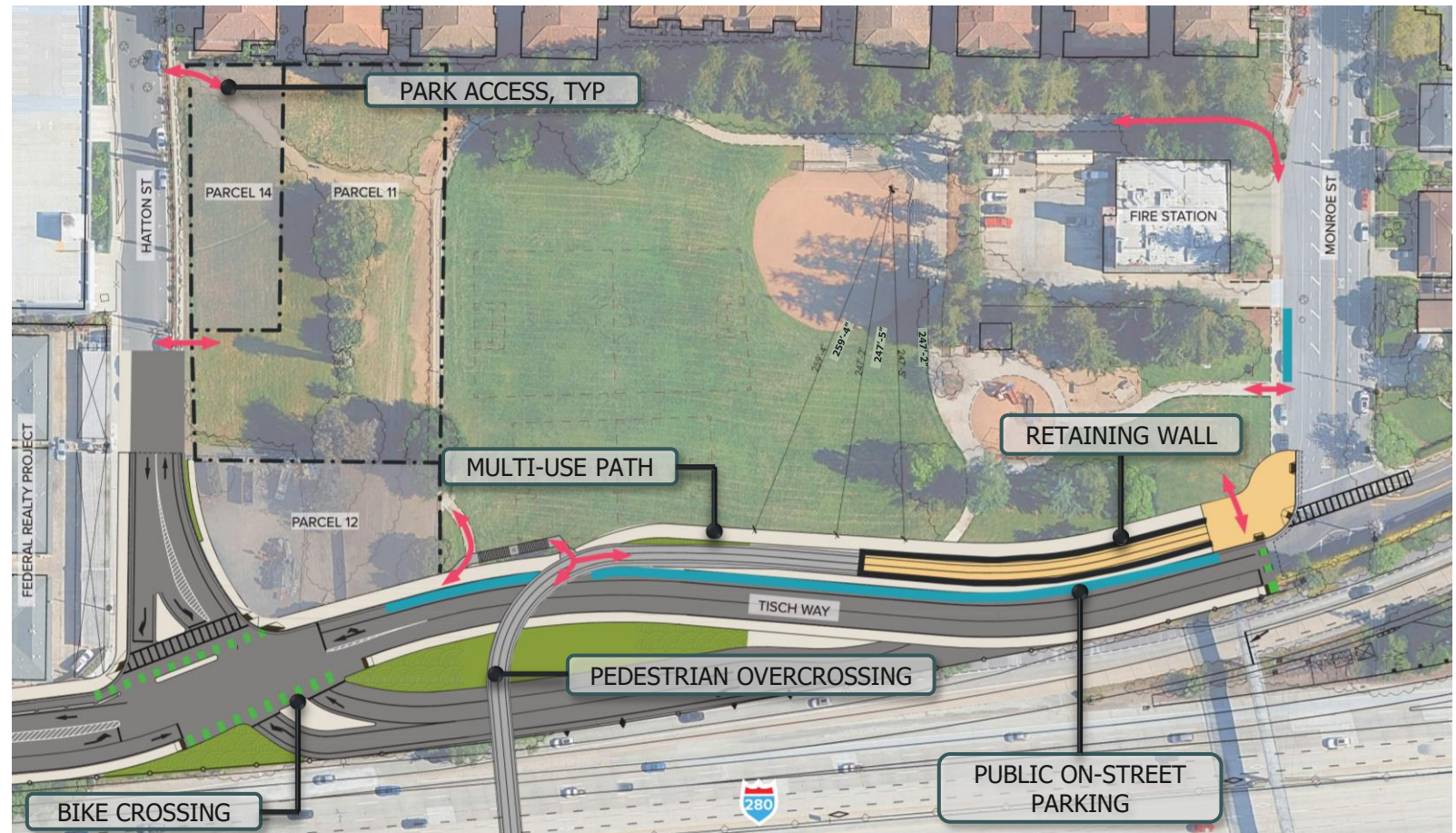
- Softball field
- Playground
- Walking path
- Parking/access
- Western parcels



# Future Site Conditions

## I-280 PROJECT IMPACTS


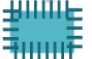




- Realignment of Tisch Way
- Softball/sport fields
- Pedestrian overcrossing
- Multi-use paths
- Parking/access



# Opportunities and Constraints

- Potentially acquired parcels
- Softball field layout
- Walking path extension
- Playground/restroom upgrades
- Site grading/drainage

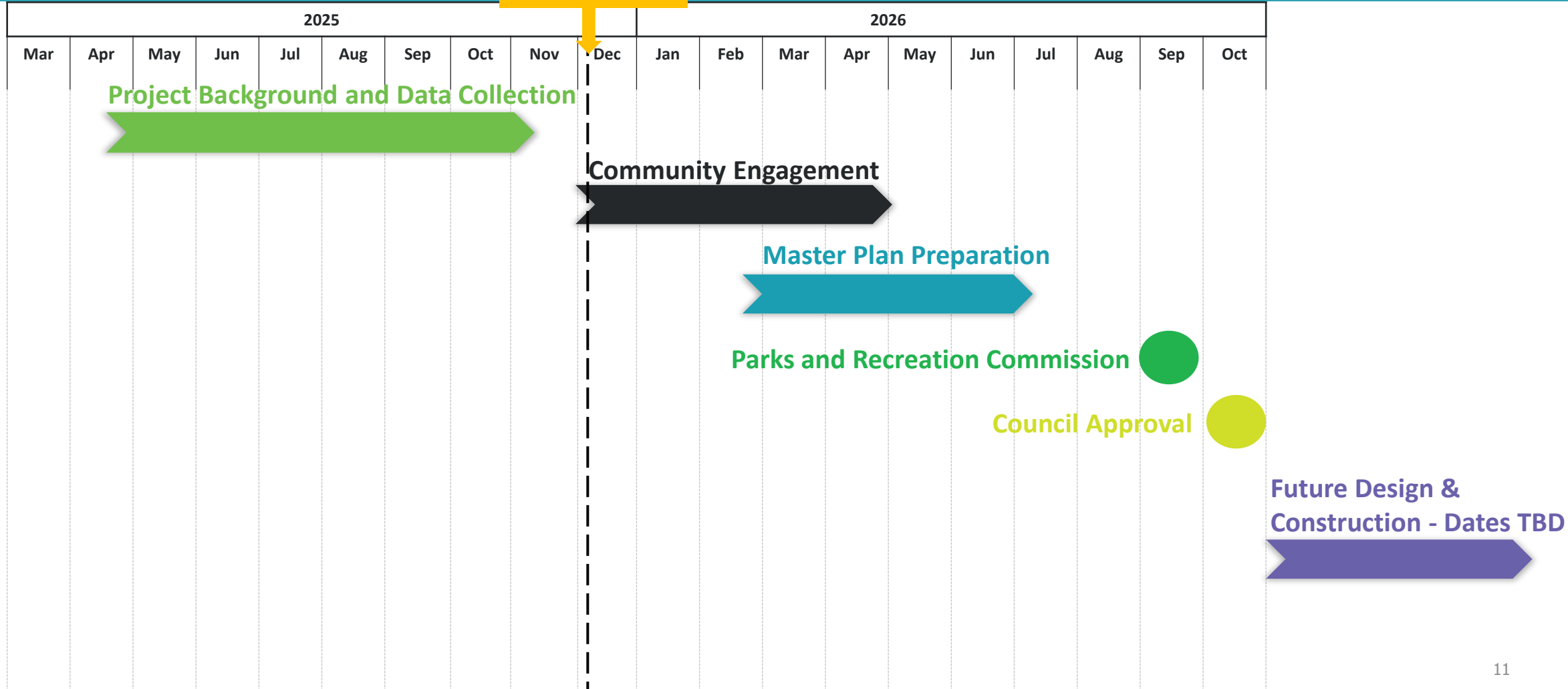
## LEGEND

-  ENTRY POINTS, GATEWAYS, PLAZAS
-  ACTIVE OPEN SPACE
-  PASSIVE OPEN SPACE
-  PLANTER SEPARATED SIDEWALK
-  POTENTIAL PEDESTRIAN PATHWAY
-  ACTIVE PLAY ZONE AREA



# Master Plan Schedule

YOU ARE HERE



# Breakout Information

## STATIONS

- Welcome/Sign-In, Project Background/Schedule
- Existing/Future Conditions
- Opportunities and Constraints
- Feedback
- I-280/Winchester Blvd. Project

## FEEDBACK

- Topics:
  - Current Values
  - Future Amenities
  - Park Theme
- How to provide feedback
  - In Person
  - City Website

# Neighboring Park Amenities

Amenities	Frank M. Santana Park 5.3 Acres	Winchester Orchard Park 2 Acres	Marijane Hamann Park 10.5 Acres	Payne Avenue Friendship Park 2 Acres	Buena Vista Park 1 Acre
Picnic Tables/BBQ	X		X	X	X
Restroom	X		X		
Playground (5-12yo)	X	X	X	X	X
Playground (2-5yo)		X	X	X	
Walking Paths	X	X		X	X
Open Turf Area	X	X		X	X
Dog Park		X			
Exercise Equipment				X	
Pickleball		X	X		
Softball Field	X		X		
Soccer Field	X				
Tennis Courts			X		
Basketball Court		X		X	
Parking		X	X	X	X
Community Garden				X	
Community Building			X		

# Next Steps

- Workshop #2 – Late Winter 2026
- Workshop #3 – Early Spring 2026
- Master Plan Document
- Parks and Recreation Commission Recommendation
- Council Approval